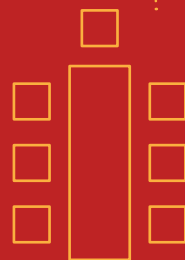
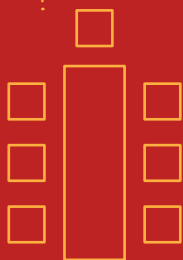




# PATHFINDER BIBLE EXPERIENCE COACH GUIDE



Pathfinder Bible Experience Coach Guide  
Created by the North American Division Youth Ministries  
Department  
Design and Layout: Liv Jacobson

Additional copies available from:  
AdventSource  
5120 Prescott Avenue  
Lincoln, Nebraska 68506  
AdventSource.org  
402.486.8800

Copyright © 2025 North American Division Corporation of  
Seventh-day Adventists.

All rights reserved. This book may be used and reproduced  
without permission from the publisher in local church printed  
matter. It may not, however, be used or reproduced in other books  
or publications without prior permission from the publisher.  
Reprinting the content as a whole for giveaway or resale is  
expressly prohibited.

Printed in the United States of America

ISBN# 979-8-88628-955-8

# COACH GUIDE

## INTRODUCTION

Embark on an exciting journey of faith and teamwork with **Pathfinder Bible Experience (PBE)**, the ultimate Bible study program for Pathfinders. This program challenges young people to study and memorize selected books of the Bible, alternating between the Old and New Testaments each year. Teams of six Pathfinders (with an optional alternate) work together to master Scripture and advance through four levels of testing—Area, Conference, Union, and Division—while deepening their connection to God’s Word.

## DECIDE TO PARTICIPATE

Participation in the Pathfinder Bible Experience should not be made lightly or at the last minute. For you to achieve the purpose of the event, Pathfinders must make a serious commitment to Bible study. To be fair to them, this means an early start and thorough preparations. In July or August, you need to encourage participation and promote the event. Study should begin soon thereafter. Club staff are encouraged to use the selected scripture as a

### Goal

Young people study a section of Scripture deeply, usually memorizing large portions, to compete in quiz-style testing.

### Teams

Teams consist of up to six Pathfinders from the same club with one alternate member.

### Task

Teams answer questions based directly on the assigned Bible book(s) and SDA Bible Commentary.

### Annual PBE Events

- Area (depending on Conference)
- Conference
- Union
- Division

### Bible Versions

- English - NKJV
- French - Louis Segond en Français (LSG)
- Spanish - Starting in 2026 the official Spanish Bible will be Nueva Reina-Valera 2000 (RVR 2000)

thematic focus for meeting worships, outreach events, and other activities as this will help reinforce the content, as well as connect non-participating Pathfinders with those who are studying for the Pathfinder Bible Experience.

### Getting Started

- Pray always.
- Choose a team name (if not already chosen).
- Create a travel budget so you are able to travel to every level.
- Divide Bible chapters and SDA Bible Commentary evenly.
- Create a memorizing/reciting schedule for each team member.

### Things to Think About

- One team vs. multiple teams
- Encourage team to eat a healthy diet – fruit and vegetables with limited sugar
- Consider ways to involve your church
- Sibling dynamics
- Be excited!



## TEAM REQUIREMENTS

Teams are made up of two to six Pathfinders from a single club. Clubs may have multiple teams participate, though individual Pathfinders can only be on one team. In certain instances where a club has a small number of eligible team members, they may join with another Pathfinder Club in a similar situation within the Conference and form a PBE team.

Teams should be as complete as possible. For example, a club would not be allowed to field three teams of four participants, but they could field two teams of six participants from that club.

Each team will be made up of the same members who began the PBE testing at the Area level (or Conference level if Area is not scheduled). If a club has multiple teams and at one of the levels of testing a club team does not advance, no member of the non-advancing team may be added to or replace any team member of the team that does advance.

## PBE Team Guidelines

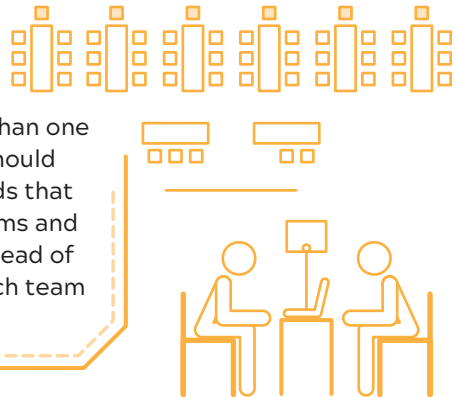
- Two to six currently enrolled and inducted Pathfinders (may include TLT's)
- Team captain (one of the six)
- Team scribe (required for both written and electronic answers)
- An alternate (in addition to the six)
- A non-playing coach



No team member from any source may be added to or replace anyone on the team roster after the first level of official testing, except in rare or extreme circumstances. The Conference PBE Director should be consulted and will be the final arbiter in those situations.

## Multiple PBE Teams

If your club is going to have more than one PBE team carefully consider who should be on each team. Distribute the kids that memorize quickly between the teams and consider how to place siblings. Instead of naming teams #1, #2, etc. have each team select their own unique name.



## Team Member Eligibility

Pathfinders are eligible to participate on a PBE team as long as they are an inducted member of that club. This includes junior, teen, and TLT Pathfinders. However, the Pathfinder is no longer eligible if they turn 19 on or after January 1 of the testing year.

## Team Captain

During play, it is the team captain's duty to listen to the consultation of the team and then determine what answer the scribe will write or type. It is also the team captain's duty to determine if the team wishes to challenge the decision of their grader after an answer is scored.

## Team Scribe

During play, it is the scribe's duty to record the answer that the team captain decides is the final answer. It is important that the scribe write legibly and is comfortable with the software (in case the electronic option is used).

## Alternate

Each team is encouraged to have an alternate participant ready to fill in if a regular team member is unable to attend an event or becomes ill during an event. The alternate may also switch out with a regular team member at the intermission. A switch is only allowed once per team, per game.

## Coach

A club staff member, pastor, or committed parent acts as the team's coach. The coach's role is to coordinate training and to motivate the team. Additional adults are welcome to assist with training, but there should be one official coach per club in charge of coordinating the club's PBE efforts.

### Coach's Role

- Keep the team motivated.
- Teach the Pathfinders how, not just what, to memorize.
- Run structured practices.
- Create a culture of love of Scripture, not just competition.



## Uniform Requirements

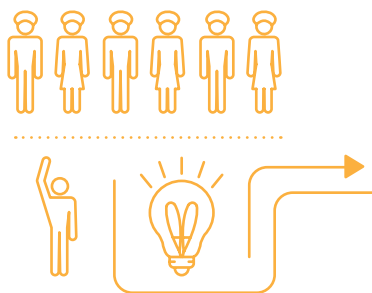
All team members must be in full dress uniform as described by the latest version of the official North American Division Uniform Guide (available from AdventSource) in order to participate at any level event. This uniform normally includes dress uniform shirt with proper insignia, dress uniform pants or skirt, authorized socks or stockings, authorized shoes, Pathfinder belt, Pathfinder scarf and slide, and Pathfinder sash.

## Board Approval

As with all Pathfinder events, the church board must vote to approve participation as well as acknowledgement of the specific event dates for inclusion on the local church calendar.

### Team Selection

At some point in late summer or early fall, the coach, in consultation with the club staff and the interested Pathfinders, must establish specific team(s) to participate.



## BUILDING THE FOUNDATION

### a. Spiritual Emphasis

- Start each practice with prayer and a short devotional from the study book.
- Remind Pathfinders: this isn't just about recall — it's hiding God's Word in the heart (Psalm 119:11).

### b. Team Organization

- Divide the assigned chapters among team members. The coach should read through all the chapters for the year and divide them evenly (by length and content).
- The coach can either divide the assigned chapters into six sections and assign each team member their section OR divide the assigned chapters into three sections and pair team members.
- Pair strong memorizers with newer members for support.
- Create a group chat for encouragement and reminders.

## PRACTICE QUESTIONS

During the fall of the year, ask various individuals such as pastors, teachers, Sabbath School leaders, parents, and church members to prepare practice questions covering the sections of scripture for the year and the related book introductions from the SDA Bible Commentary. You might even arrange to share practice questions with other clubs in your area or conference.